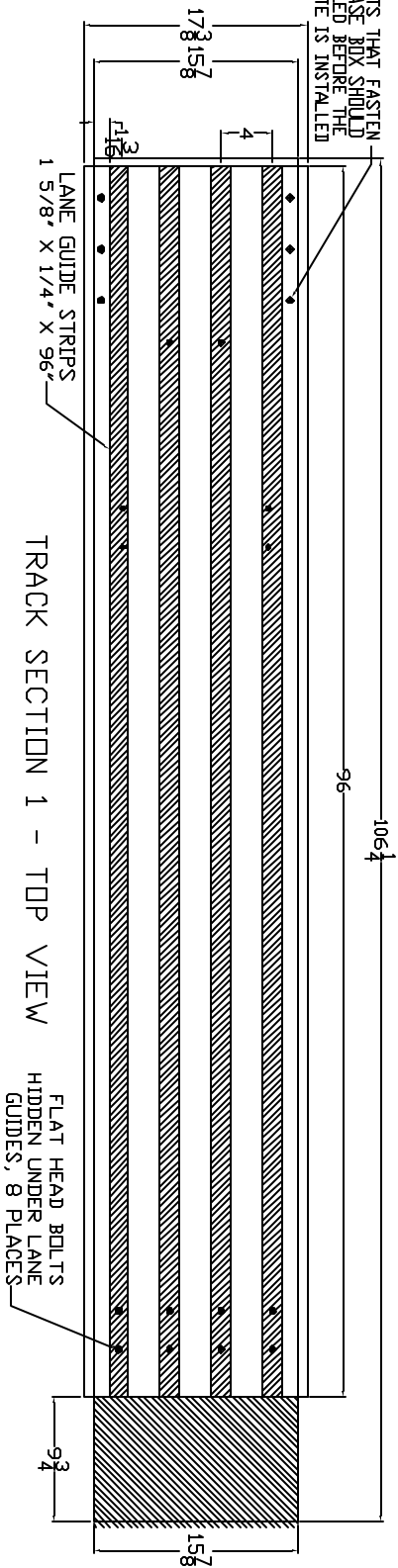
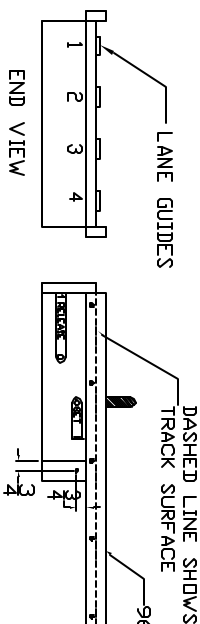


THE BOLTS THAT FASTEN THE RELEASE BOX SHOULD BE INSTALLED BEFORE THE LAMINATE IS INSTALLED



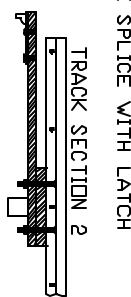
TRACK SECTION 1 - TOP VIEW

FLAT HEAD BOLTS  
HIDDEN UNDER LANE  
GUIDES, 8 PLACES

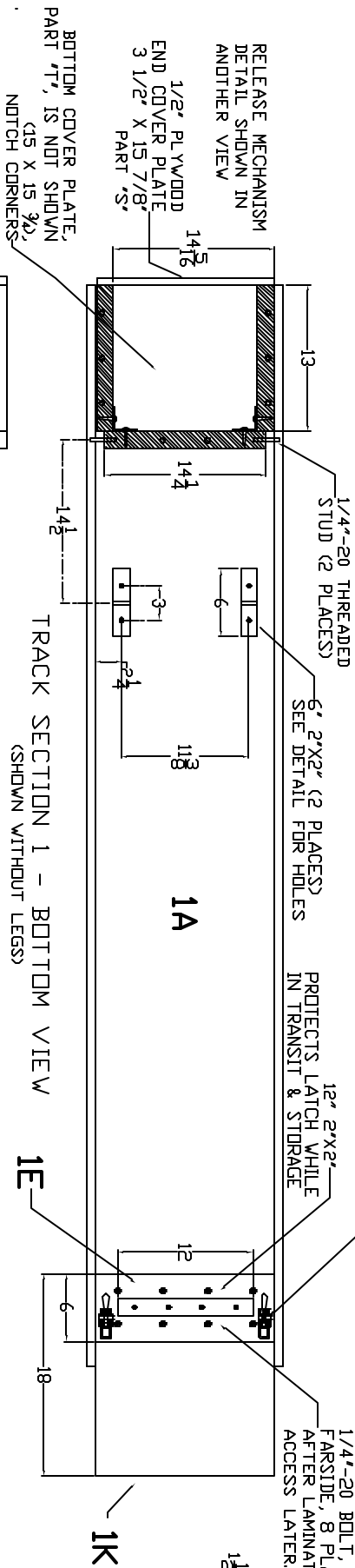


TRACK SECTION 1 - SIDE VIEW

TRACK PART 1K  
TRACK PART 1E



TRACK SECTION 2



TRACK SECTION 1 - BOTTOM VIEW  
(SHOWN WITHOUT LEGS)

OVER-CENTER LATCH  
2 PLACES

LEG BLOCK DETAIL

TRACK SECTION 1