

CAR RESTRAINT BARS

CAR RELEASE LEVER

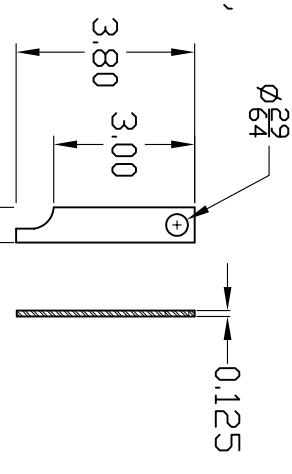
CAR RESTRAINT  
"SET" LEVER

29/64 THRU HOLE  
STRIKE BAR  
12 $\frac{3}{4}$ " X 1 $\frac{1}{2}$ " (#4)  
THRU SLOTS FOR  
RESTRAINT BARS  
5 X  $\frac{1}{4}$   
1/4"-20 THREADED  
STUD (2 PLACES) (#47)  
RELEASE - SIDE VIEW  
STRIKE BAR SPANS  
ACROSS BOTTOM OF BOX  
TO ARREST THE CAR  
RESTRAINT BARS AFTER  
RELEASE. CARPET IS  
GLUED TO STRIKE SURFACE

ROTATING RELEASE MECHANISM  
IS MADE OF 7/16" THREADED  
ROD, JAM NUTS, LOCK WASHERS,  
AND THE VARIOUS ALUMINUM  
BAR STOCK SHAPES  
3 PLCS  
 $\phi \frac{5}{32}$   
2  
0.75  
SPRING LEVERS  
0.062  
4X



RELEASE COLLAR DETAIL



RELEASE - BOTTOM VIEW  
CORNER BRACE (2 PLACES)  
14.25  
7.00  
SHEET "S"  
4"- 1/4-20 FLATHEAD  
SCREW WITH FLAT AND  
LOCK WASHERS.  
COUNTERSINK FAR SIDE.  
SCREW (#14), SPRING (#26)  
7/16" THREADED ROD 4- $\frac{1}{2}$ " LONG  
9/32" THRU,  
1/2" COUNTERBORE  
3/8" DEEP (8 PLCS)  
SPRING LEVER, JAM  
NUTS (#38), LOCK  
WASHER (#36)  
LATCH BAR, JAM  
NUTS (#38), LOCK  
WASHER (#36)  
SCREW (#14),  
SPRING (#27)

END VIEW  
(SHOWN WITH PLATE "S" REMOVED)  
FLAT WASHER (#37),  
(BOTH INSIDE ENDS)  
JAM NUTS (#38),  
LOCK WASHER (#36),  
SPRING LEVER  
JAM NUTS (#38),  
LOCK WASHER (#36),  
RESTRAINT BAR (4 PLCS)  
RELEASE COLLAR  
LOCK WASHER (#36),  
JAM NUTS (#38),  
SET LEVER

# RELEASE MECHANISM

UPDATED 2 SEPT 2004

LARRY BODSWORTH